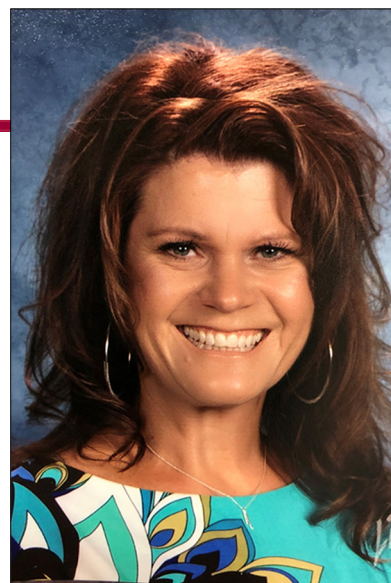


Jennifer Nehl

Jennifer A. Nehl began serving at-risk youth in 1994 as a high school ELA teacher/vice principal. During this assignment, she developed a desire to learn more about the behaviors of the at-risk and underserved in order to provide the highest-quality learning opportunities possible. Nehl has worked at all levels—elementary, middle school, high school, and university—and has seven years' administrative experience. She has taught K–12 music and high school ELA, social studies, and science. She was also the statewide literacy coordinator for the South Dakota Department of Education.

Upon leaving teaching and administration, Nehl embarked on a 10-year journey as an education specialist, providing professional development nationwide. She possesses expertise in literacy, best teaching practices, relationship building, building culture and climate in schools and classrooms, parent engagement, and data retreats. However, the training she has enjoyed delivering the most is A Framework for Understanding Poverty. Nehl began by training schools where she was a principal and saw successes for students, parents, and teachers.

"When I speak about Dr. Payne's research, I am usually met with skepticism and pushback by at least a few people. When we begin to talk about the 'why our kids do what they do, and have you ever seen _____ in your classroom?' these participants soften and open up to the conversation. I love when these same participants are the first ones to approach me later to thank me and comment on how much they've learned!"



Selected workshops presented by Jennifer Nehl

- ♦ Emotional Poverty
- ♦ A Framework for Understanding Poverty
- ♦ Research-Based Strategies

With consultants and publications around the world, aha! Process helps communities move individuals, families, and entire neighborhoods out of poverty and into sustainability and growth.



EMOTIONAL
poverty



aha! Process, Inc.
P.O. Box 727
Highlands, Texas 77562

Local: +1 (281) 426-5300
Toll-Free: +1 (800) 424-9484
Fax: +1 (281) 426-8598

www.ahaprocess.com